

# Rotana Signs

*Al Abdulkarim Tower*

*Overview*

# Al Abdulkarim Tower

## King Fahad Road, Al Qashlah, Dhahran

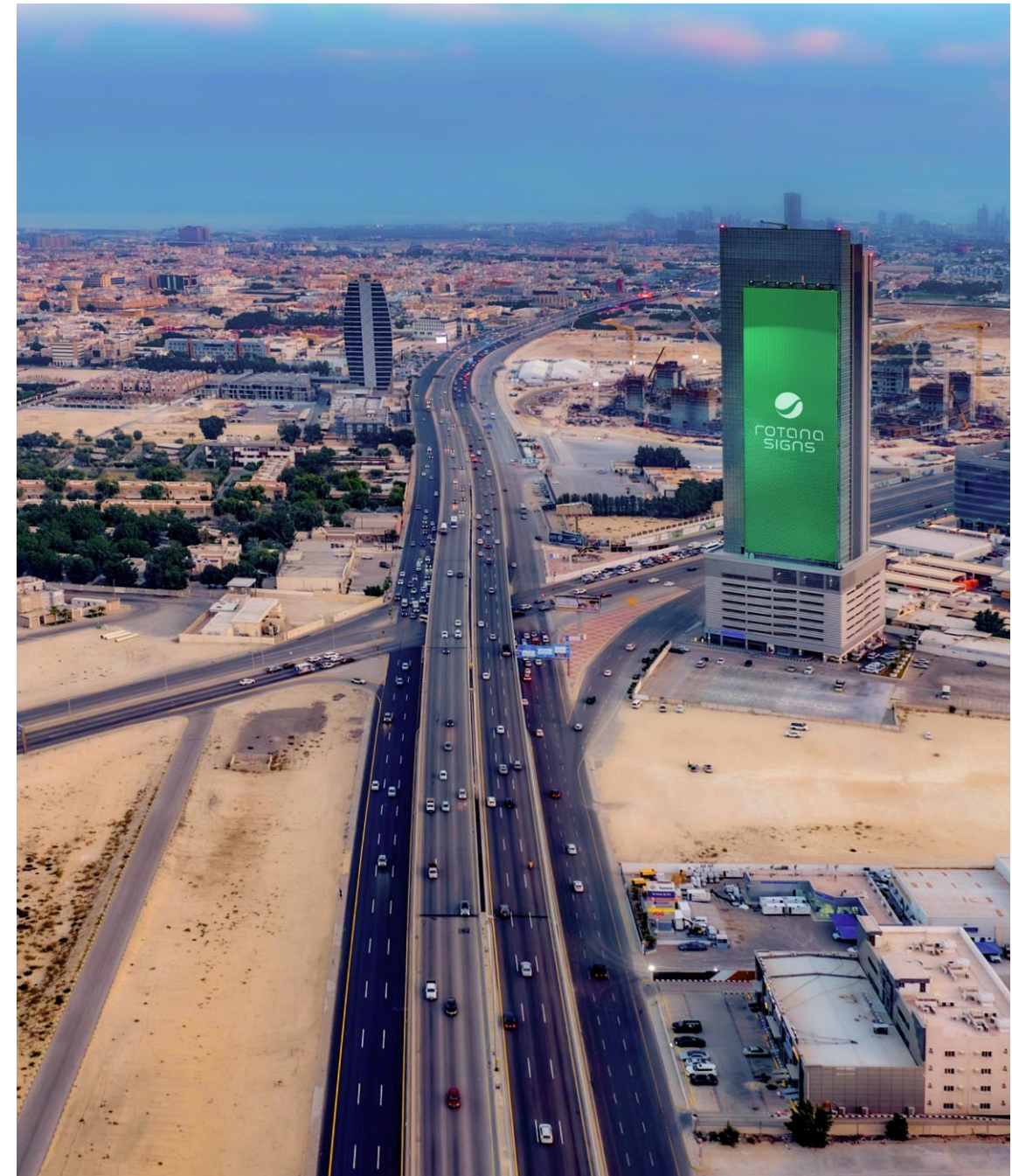
<b>Facades:</b>	1	<b>Total Dimension:</b>	30 meters x 90 meters (W x H)
<b>Installation:</b>	Northern Facade	<b>Total Façade Space:</b>	2,700 m <sup>2</sup>
<b>Orientation:</b>	Portrait	<b>Location Map:</b>	<a href="#">Click Here</a>

Standing tall at 150 meters with 41 floors, the **Al Abdulkarim Tower** is the tallest commercial building in the Eastern Province. It is situated at the northeastern edge of Dhahran in the vicinity of Al Qashlah at the intersection of King Fahad Road and King Saud Road, a central artery of the Dammam Metropolitan Area.

The tower will feature one of the largest Digital Screens in the eastern province on its northern façade. This prominent screen will provide extensive exposure to motorists traveling southwards towards Khobar from Dammam and westwards along King Saud Road.

The tower's significance is underscored by its location on King Fahad Road, the primary inner route of the region, which centrally connects the cities of Dammam, Dhahran, and Khobar.

This central position ensures that all traffic traveling between these cities, as well as to surrounding residential areas and key commercial and public establishments, passes by the tower.



# The Surrounding Vicinity



## Al Abdulkarim Tower

### North of Façade | within 900 meters

- Gama Hospital
- Abdullah Fouad Group
- Al Jazirah Vehicles Dealership and Service Center
- Mazda Showroom
- Basic Car Dealership, among others

### Surrounding Vicinity

Notable establishments include:

- Cherry Car Dealership
- Harley Davidson Dealership
- Kempinski Al Othman Hotel
- Several commercial towers attracting large audiences.

### Governmental Entities

- Asharqia Chamber Tower
- Chamber of Commerce and Industry in the Eastern Province
- Ministry of Foreign Affairs

### East of Façade | Residential Vicinity

The eastern area of the tower is predominately a residential vicinity of Dammam that includes the:

- Al Safa neighborhood
- Al Hussam neighborhood

They are filled with various apartment complexes, compounds and schools

### Educational Institutions

The area is rich in educational institutions that include:

- Mohammed Al-Mana College for Medical Sciences
- International Indian School
- Al Forsan International School
- Alhussan-Orbit International School
- College of Design
- Technical Institute of Naval Studies



# Al Abdulkarim Tower Visibility

King Fahad Road, Al Qashlah, Dhahran | 2KM Radius

Location Map:

[Click Here](#)

Optimal Visibility

General Visibility

Partial Visibility



# Thank you

